

# WFD Common Implementation Strategy

## Working Groups and progress achieved



H. Blöch, European Commission

First EWA Brussels Conference 25 October 2005

**“European River Basin Management Policy”**



# Common Implementation Strategy



- **WFD – a considerable technical challenge for all parties – countries, European Commission, local and regional authorities, stakeholders and NGOs, in terms of substance as well as deadlines**
- **Majority of large river basins in Europe are shared**
- **Common understanding of Directive of crucial importance for a successful implementation**
- **... leading to a new approach in implementation, the WFD Common Implementation Strategy:  
In a unique effort, European Commission and countries agreed on a Common Implementation Strategy, only 4 months after the publication of the Directive**
- **Already today serving as example of Good European Governance**

# Common Implementation Strategy



- **25 Member States, European Commission, Romania, Bulgaria and EFTA countries cooperating, actively involving about 1000 people**
- **NGOs and stakeholders: WWF, BirdLife, EEB, EWA, Eureau, CEFIC, COPA, ECPA, Eurelectric, ESPO (harbour operators), EPRO (regional offices), etc.**

# Common Implementation Strategy



COMMON IMPLEMENTATION STRATEGY  
FOR THE WATER FRAMEWORK DIRECTIVE  
(2000/60/EC)



STRATEGIC DOCUMENT  
AS AGREED BY THE WATER DIRECTORS  
PRESIDENCY  
2 MAY 2001

COMMON IMPLEMENTATION STRATEGY  
FOR THE WATER FRAMEWORK DIRECTIVE  
(2000/60/EC)



Carrying forward the  
Common Implementation Strategy for the  
Water Framework Directive

*-Progress and Work Programme for 2003 and 2004-*

AS AGREED BY THE WATER DIRECTORS  
17 June 2003

COMMON IMPLEMENTATION STRATEGY  
FOR THE WATER FRAMEWORK DIRECTIVE  
(2000/60/EC)



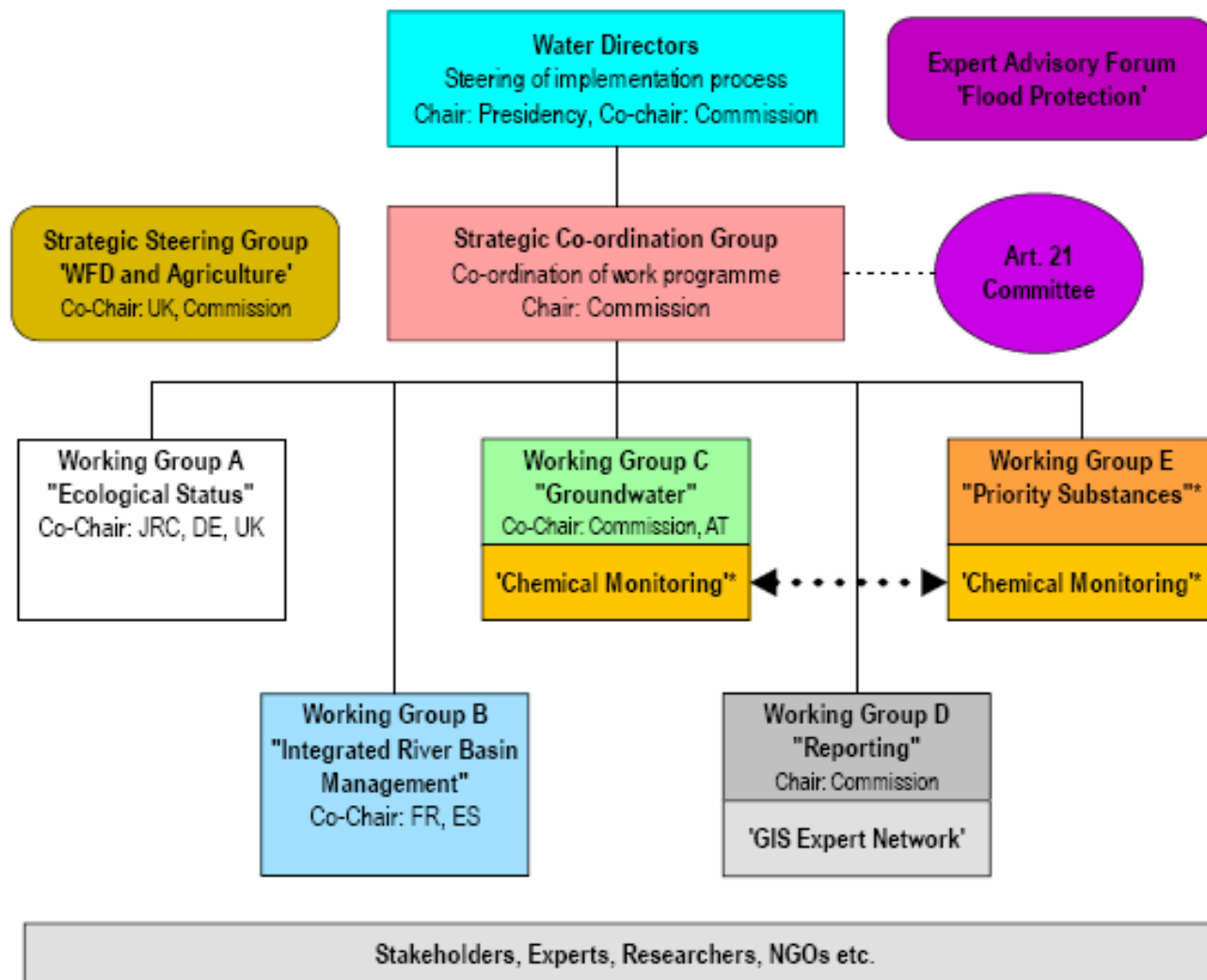
Moving to the next stage in the  
Common Implementation Strategy for the  
Water Framework Directive

*Progress and work programme for 2005 and 2006*

AS AGREED BY THE WATER DIRECTORS

2/3 December 2004

# Working Structure 2005-2006



COMMON IMPLEMENTATION STRATEGY  
FOR THE WATER FRAMEWORK DIRECTIVE  
(2000/60/EC)



Moving to the next stage in the  
Common Implementation Strategy for the  
Water Framework Directive

Progress and work programme for 2005 and 2006

AS AGREED BY THE WATER DIRECTORS

23 December 2004

Implementation Strategy – Progress and work programme for 2005-2006

Table of Contents

..... 1

ts in 2003/2004 ..... 3

ivities in 2005/2006 ..... 6

hal aspects ..... 9

emarks ..... 10

..... 13

rganisation and tasks of Working Groups and Activities under the WFD  
mentation Strategy in 2005/2006 ..... 15

roaches for maintaining networks of the former Working Groups ..... 63

ing Structure under the WFD Common Implementation Strategy in  
iew) ..... 85

THIS DOCUMENT AS WELL AS THE PREVIOUS WORK PROGRAMMES OF THE WFD  
COMMON IMPLEMENTATION STRATEGY ARE PUBLISHED UNDER  
<http://europa.eu.int/comm/environment/water/water-framework/implementation.html>



Activity/ task	Issues	Duration	Main Deliverables
1	Intercalibration exercise	2005-2006	1) Analysis of consistency and comparability of the IC network 2) Final report on Intercalibration exercise: values for harmonised classification boundaries 3) Proposals for the revision of the Intercalibration network.
2	Eutrophication	2005	Guidance document
3	Monitoring Harmonisation	& 2005-2006	Overview report of common classification tools/ metrics applied in the intercalibration exercise Reports to WG A on needs for harmonisation & proposals for standardisation

V. Lead country/body

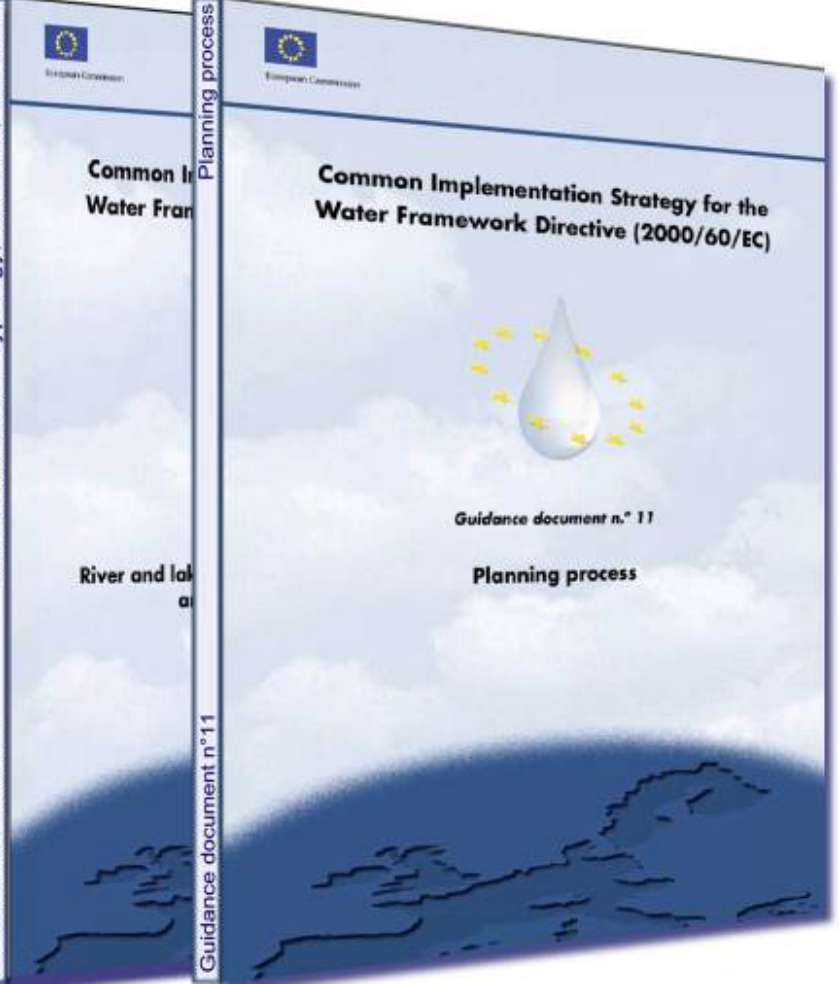
The working group is lead jointly by the EC Joint Research Center (JRC), Institute for Environment and Sustainability (IES), UK and Germany.

Name	Organisation/ Member State	E-mail
Peter Pollard	SEPA (UK)	<a href="mailto:Peter.Pollard@sepa.org.uk">Peter.Pollard@sepa.org.uk</a>
Ulrich Irmner	UBA (Germany)	<a href="mailto:ulrich.irmner@uba.de">ulrich.irmner@uba.de</a>
Wouter van de Bund	JRC-IES	<a href="mailto:wouter.van-de-bund@jrc.it">wouter.van-de-bund@jrc.it</a>
Anna-Stina Heiskanen	JRC-IES	<a href="mailto:anna-stina.heiskanen@jrc.it">anna-stina.heiskanen@jrc.it</a>

VI. Participants

All Member States, other countries in the CIG, stakeholders and NGOs can nominate experts to this group through their representative in the Strategic Coordination Group. The intercalibration exercise will be carried out between Member States, which share similar types of surface water and which are organised in Geographical Intercalibration Groups (GIGs). There are currently 15 GIGs covering all surface water categories, Member States and other countries (Norway, Bulgaria, Romania). Each GIG has a nominated informal GIG coordinator, who is invited as a member of the Working Group A. CEN is also represented to input on matters of standardisation.

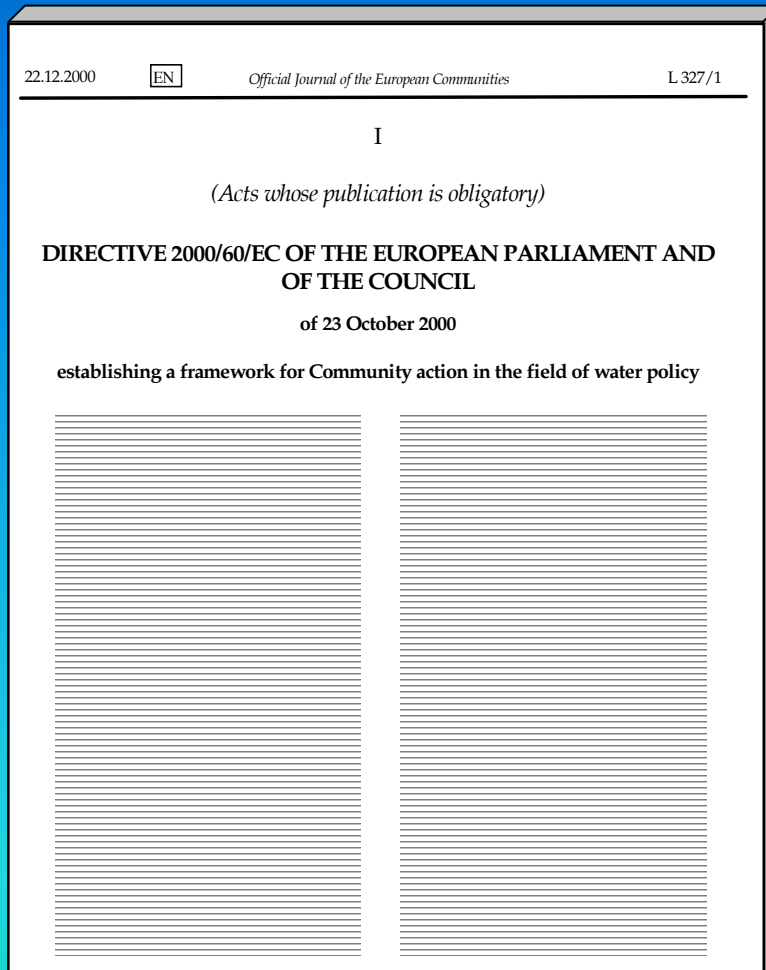
Guidance document n°1	Economics and the environment The implementation challenge of the WFD
Guidance document n°2	Identification of Water Bodies
Guidance document n°3	Analysis of Pressures and Impacts
Guidance document n°4	Identification & Designation of Heavily Modified & Artificial Water Bodies
Guidance document n°5	Transitional and Coastal Waters
Guidance document n°6	Towards a guidance on establishment of the intercalibration network and the process on the intercalibration exercise
Guidance document n°7	Monitoring under the Water Framework Directive
Guidance document n°8	Public Participation in relation to the WFD
Guidance document n°9	Implementing the Geographical Information System Elements (GIS) of the Water Framework Directive
Guidance document n°10	River and lakes - Typology, reference, conditions



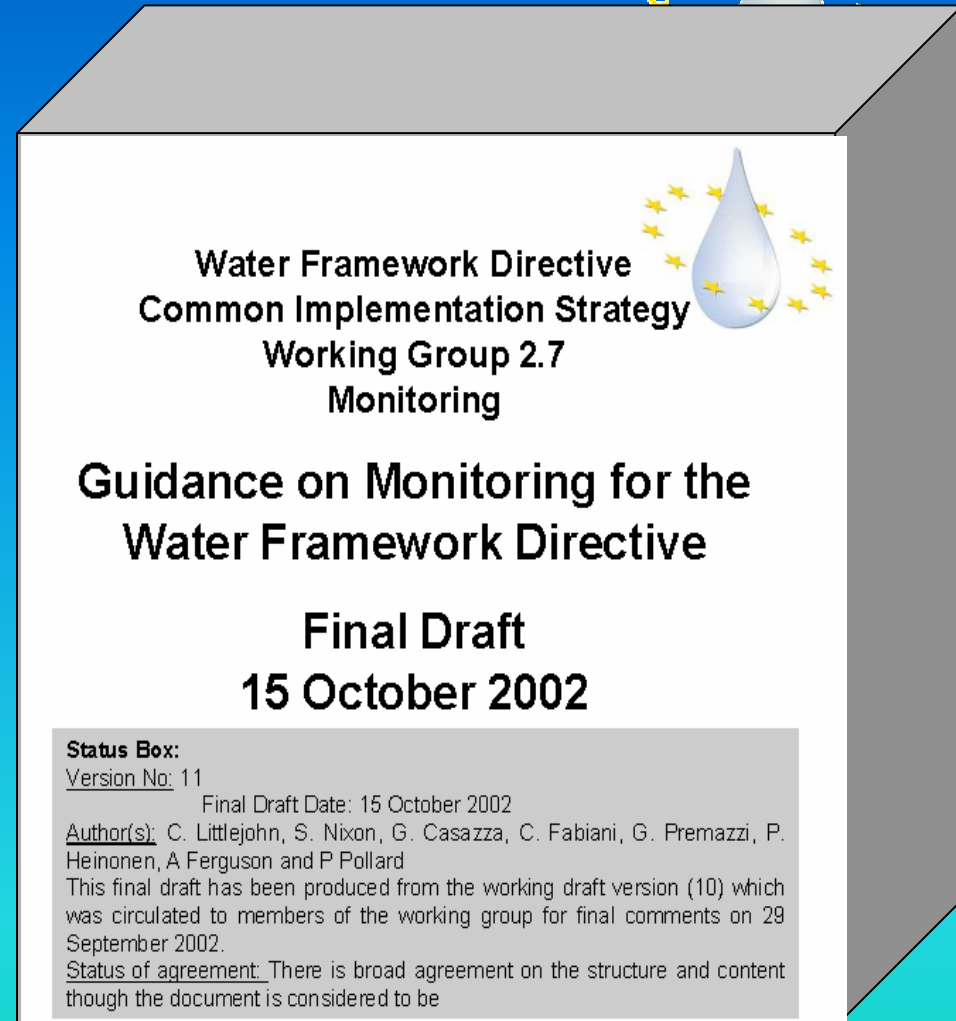
# Directive



# Guidance



Less than 10 pages  
on monitoring

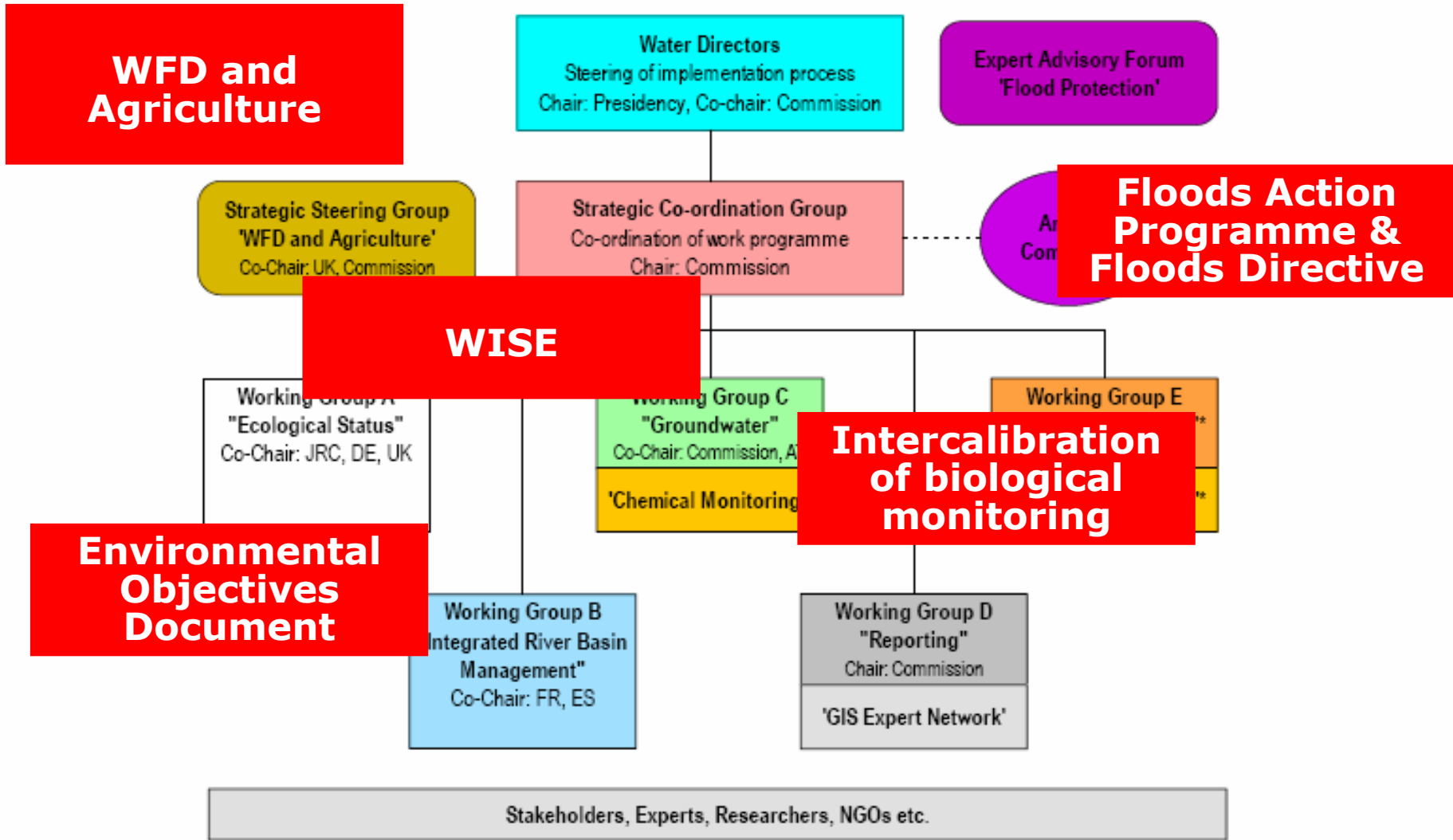


165 pages on  
monitoring !

Courtesy P.Pollard SEPA



# Selected elements



COMMON IMPLEMENTATION STRATEGY  
FOR THE WATER FRAMEWORK DIRECTIVE



ENVIRONMENTAL OBJECTIVES UNDER THE  
WATER FRAMEWORK DIRECTIVE

POLICY SUMMARY AND BACKGROUND DOCUMENT

September 2005



19.9.2005 **EN** Official Journal of the European Union L 247/1

II  
(Acts whose publication is not obligatory)

COMMISSION

COMMISSION DECISION  
of 17 August 2005  
on the establishment of a register of sites to form the intercalibration network in accordance with  
Directive 2000/60/EC of the European Parliament and of the Council  
(notified under document number C(2005) 3140)  
(2005/046/EC)

THE COMMISSION OF THE EUROPEAN COMMUNITIES,

Having regard to the Treaty establishing the European Community,

Having regard to Directive 2000/60/EC of the European Parliament and of the Council of 23 October 2000 establishing a Framework for Community action in the field of water policy (1), and in particular section 1 A.1(a) of Annex V therein;

Whereas

0) Article 4(1)(a)(i) of Directive 2000/60/EC requires the Member States to protect and enhance all bodies of surface water with the aim of achieving good surface water status at the latest 15 years after the date of entry into force of the Directive, subject to certain exceptions, in accordance with the provisions laid down in Annex V therein. Article 4(1)(a)(ii) of Directive 2000/60/EC requires the Member States to protect and enhance all artificial and heavily modified bodies of water, with the aim of achieving good ecological potential and good surface water chemical status at the latest 15 years from the date of entry into force of the Directive, subject to certain exceptions, in accordance with the provisions laid down in Annex V therein. In accordance with point 9) of Section 1 A.1. of Annex V to Directive 2000/60/EC the references to ecological potential regarding artificial and heavily modified water bodies.

1) Section 1 A.1 of Annex V to Directive 2000/60/EC provides a procedure to ensure the comparability between Member States of biological monitoring results, being a core part of the ecological status classification. This requires the results of the data for State monitoring and classification estimates to be compared through an intercalibration network comprised of monitoring sites in each Member State and in each category of the Community. The Directive requests the Member States to collect, as appropriate, the necessary information for the sites included in the intercalibration network, in order to enable the assessment of the consistency of the national classification systems with the comparative objectives of Annex V to Directive 2000/60/EC and the comparability of the classification systems between the Member States.

2) For the purposes of the establishment of the register of sites to form the intercalibration network referred to in section 1 A.1(a)(ii) of Annex V to Directive 2000/60/EC, Member States were asked to select sites based on the interpretation of the comparative objectives of the high-potential and good-ecological status boundaries. For those sites, notifications of the current provisional classification status were required. Each Member State was asked to provide, if possible, relevant information for, at least, two sites for each of these two boundaries for each of the categories surface water body types selected for the intercalibration network, and present in its jurisdiction. The Member States were also invited to indicate whether any sites of the classification border but not necessarily precisely on the border as provisionally classified by the current national assessment methods.

(1) OJ L 325, 22.12.2000, p. 1. Directive as amended by Decision No 2455(2004/EC) (OJ L 331, 15.12.2004, p. 1).

# **New EU Agricultural Policy: crucial aspects for the WFD (1)**

(legislation adopted 2003, on Rural Development 2005)



- **One single farm payment independent of crop production (“de-coupling”)**
- **Compliance with EU legislation, inter alia on certain environmental directives, as a precondition for de-coupled farm payments (“cross-compliance”)**

21.10.2005

EN

Official Journal of the European Union

L 277/1

I

*(Acts whose publication is obligatory)*

COUNCIL REGULATION (EC) No 1698/2005  
of 20 September 2005

on support for rural development by the European Agricultural Fund for Rural Development  
(EAFRD)

## **New EU Agricultural Policy: crucial aspects for the WFD (2)**



---

**2004 → 2005 → 2006 → 2007 → 2008 → 2009 →**

- **Largely parallel implementation of new CAP and WFD**
- **WFD – pressures and impact assessment: available**
- **Use information for ex-ante analysis of Rural Development Programmes (RDPs) under CAP**
- **Planning and Development of RDPs**
- **Agri measures included in River Basin Management Plans and Programmes of Measures by 2009 - Implemented 2012.**
- **Modifications of RDPs to take account of RBMPs**

## WISE (1)



- **Water Information System for Europe (WISE) defined and agreed through concept paper**
- **21<sup>st</sup> century approach for water reporting, phasing out the existing, inefficient paper-based reporting**
- **One conceptual approach fulfilling several purposes/needs**
- **Aims at developing the water component in a wider system of environmental reporting**

## WISE (2)

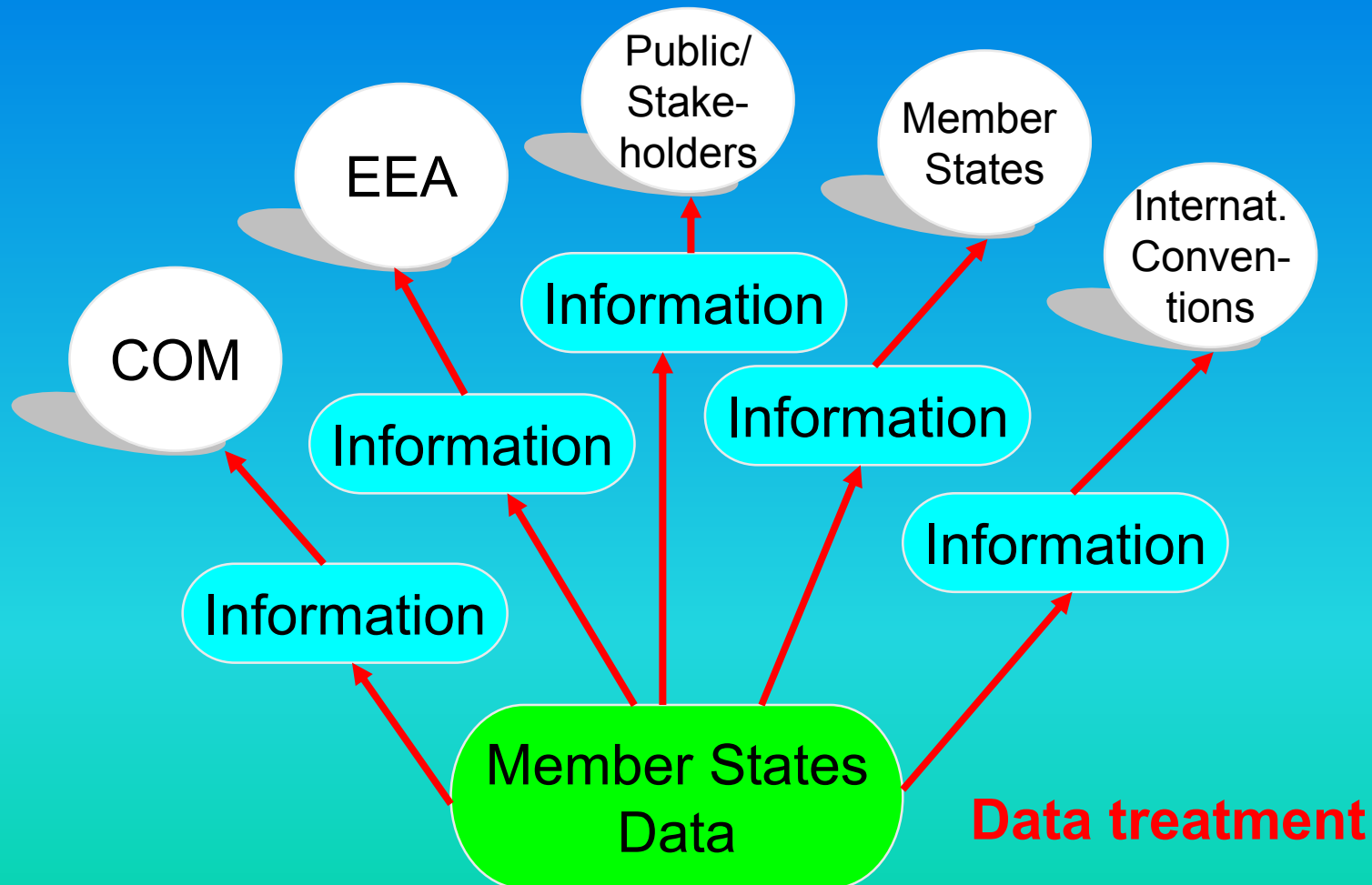


- **Efficient management of all water-related information at EU level**
- **Coherence between various reporting mechanisms and needs**
- **Access to information / data for various purposes and needs**

# WISE (3): the current situation



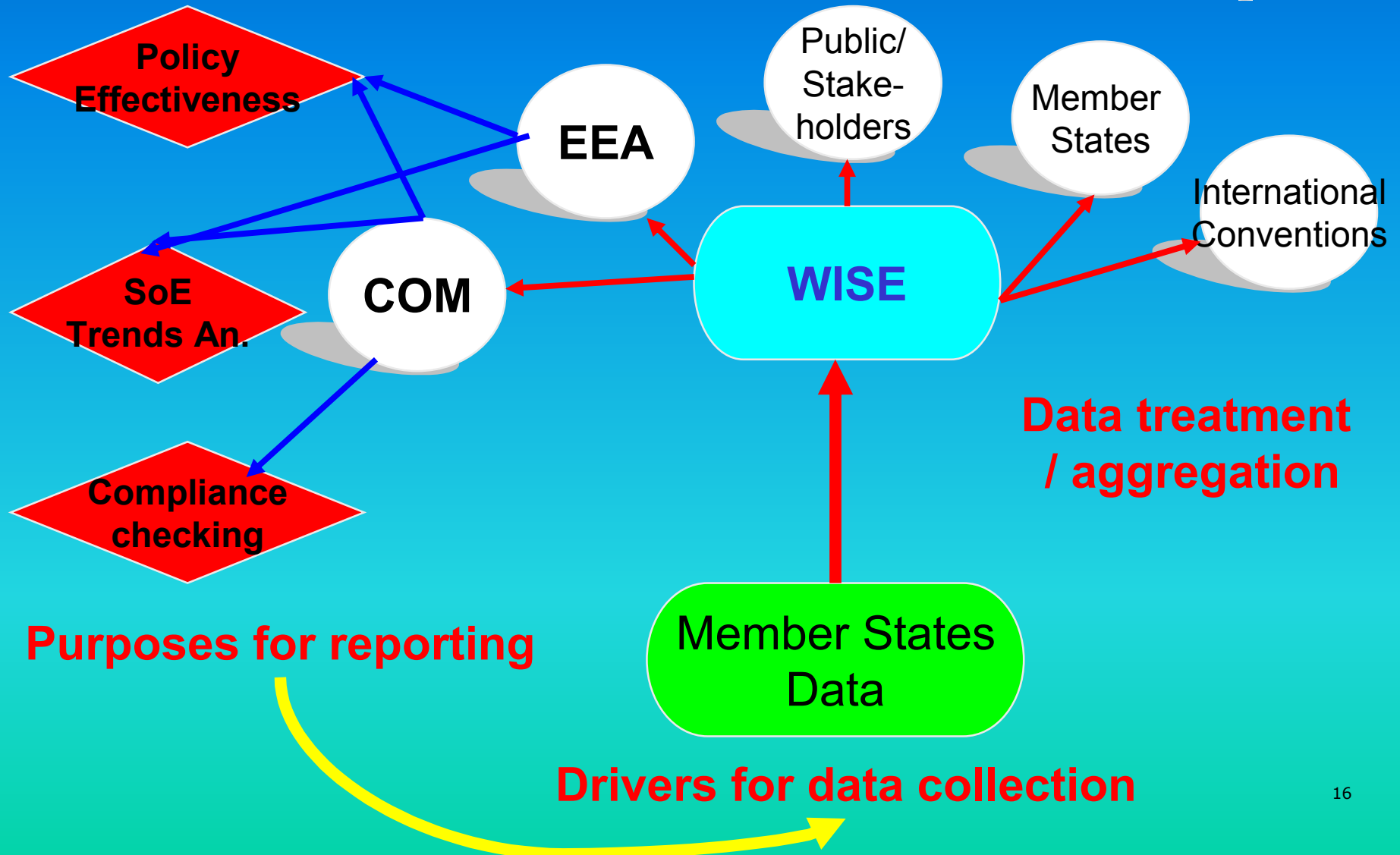
## Information Users



# WISE (4): the common vision



## Information Users





## Outlook



- **WFD to protection all waters across Europe, based on comparable principles and objectives**
- **Binding objectives, at the same time providing flexibility on the tools how to achieve them**
- **Long-term planning basis for technical, financial and political decisions**
- **Common Implementation Strategy has successfully guided the implementation process so far – as an example of Good European Governance; river basin management will continue to be in many aspects a iterative learning process**
- **Already now a basis for planning and prioritisation across the EU, as well as beyond EU borders, e.g. in the whole Danube basin**

A scenic landscape photograph showing a large, calm lake with several small, forested islands. The view is from an elevated position on a grassy hillside with trees in the foreground. The sky is filled with large, white, fluffy clouds. The text "Thank you for your attention." is overlaid in the center of the image.

**Thank you for your attention.**

This contribution reflects the views of the author and not necessarily those of the European Commission.